



"AIG-konstruktijas" Ltd  
Phone: + 371 292 787 05  
[www.aig-familyhouses.eu](http://www.aig-familyhouses.eu)  
[info@aig-familyhouses.eu](mailto:info@aig-familyhouses.eu)

Buildingset

# OPTIMA

Delivery list

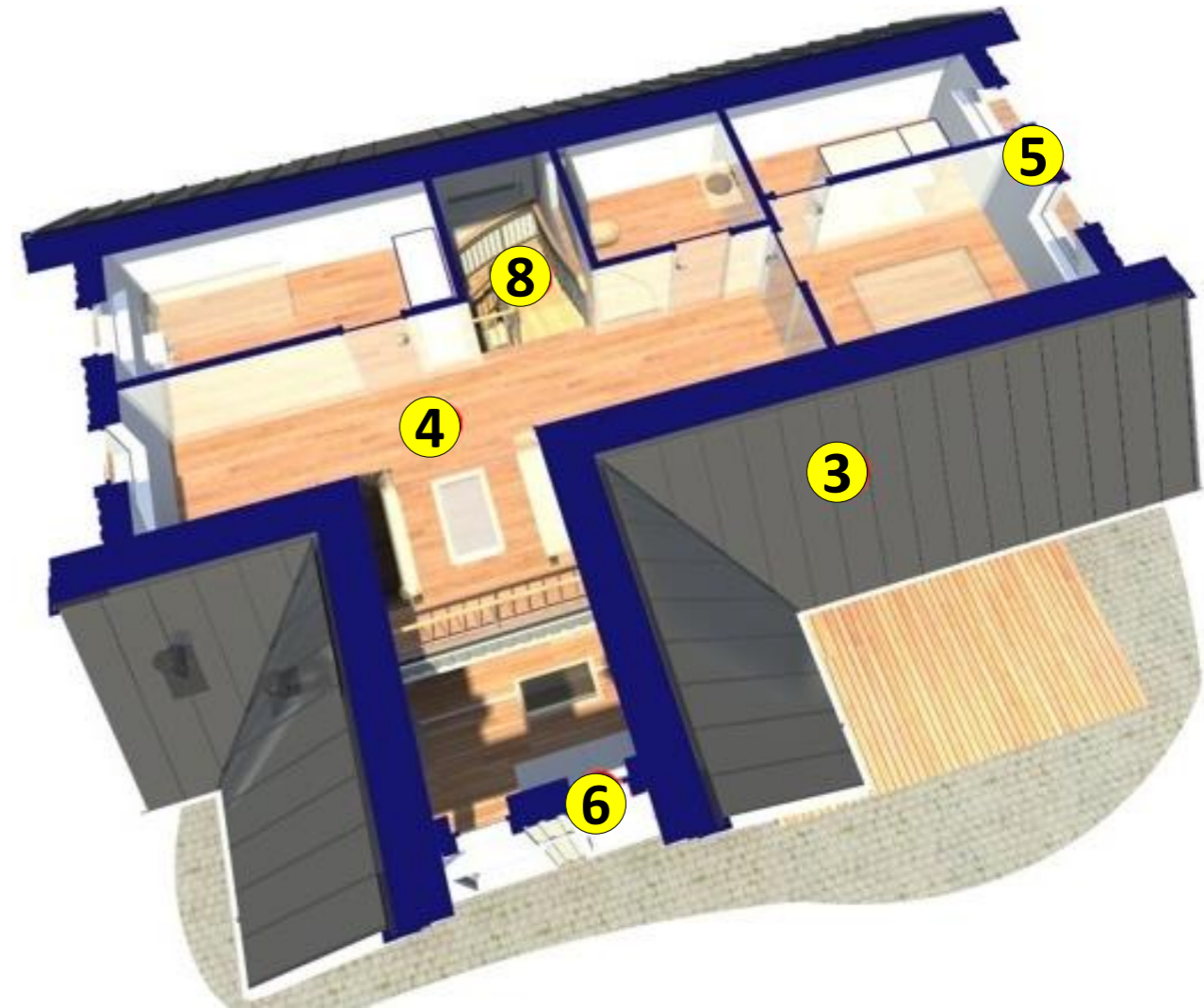




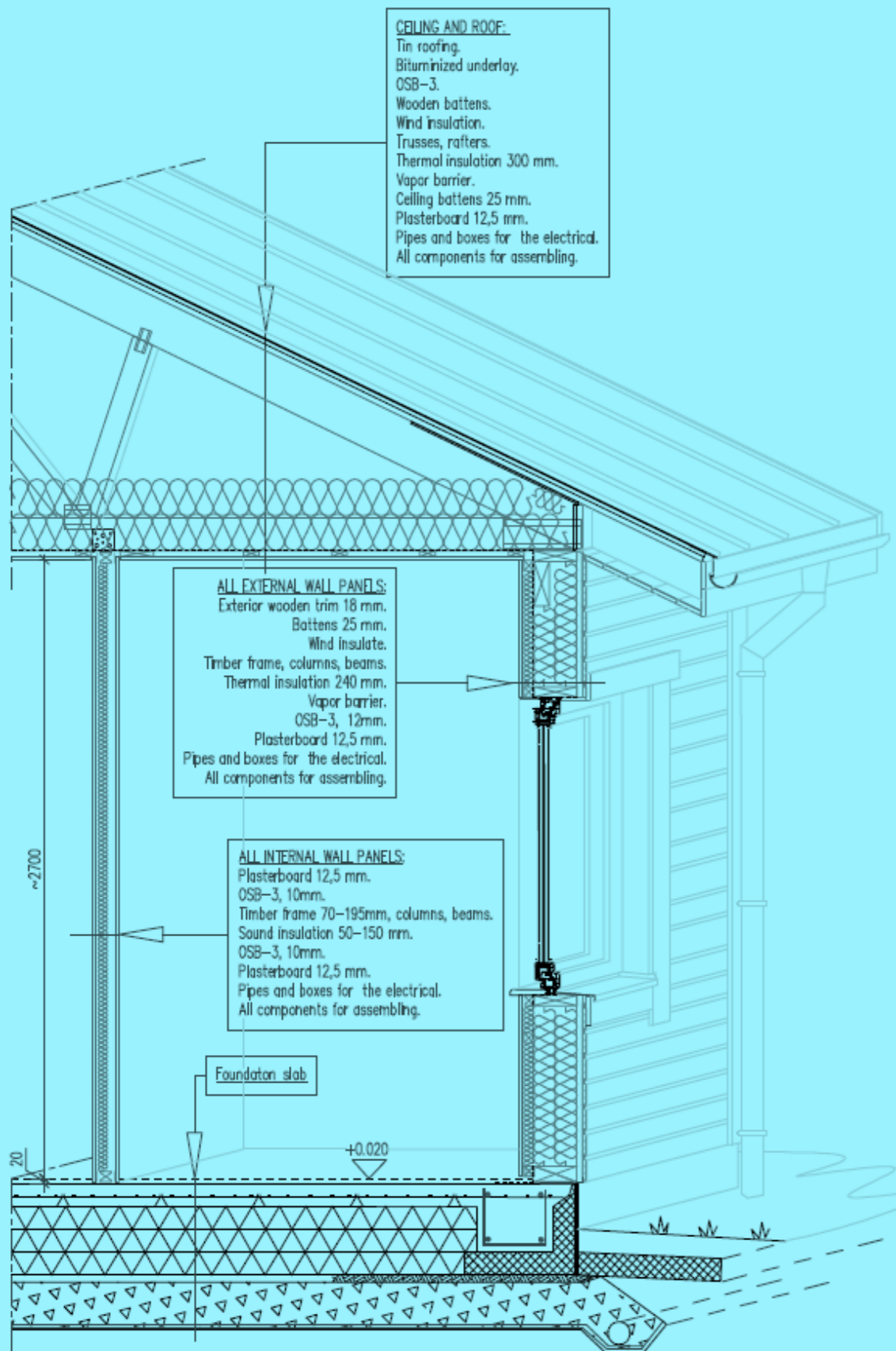
## Shortly

- |  |   |
|--|---|
| <b>1</b> Include<br>All external walls     | <b>5</b> Include<br>Exterior finishing for windows and external doors |
| <b>2</b> Include<br>All internal walls     | <b>6</b> Include<br>Windows and sills                                 |
| <b>3</b> Include<br>Roof construction      | <b>7</b> Include<br>External doors                                    |
| <b>4</b> Include<br>Mezzanine construction | <b>8</b> <b>Not include</b><br>Staircase & balustrade                 |

This building set is completed in the manufacturer's warehouse with the amount of materials, which allow assemble the house above the foundation so that it is finished from the outside. In this building set doesn't include: foundation construction, engineering communications, inside finish, staircase, delivery and assembly costs.



## CONSTRUCTION FOR 1 STORY HOUSES



# Construction for 1 story houses

1

## ALL EXTERNAL WALL PANELS (U~0,168 W/(m<sup>2</sup>K):

Exterior wooden trim 18 mm.  
Battens 25 mm.  
Wind insulation.  
Timber frame, columns, beams.  
Thermal insulation 240 mm.  
Vapor barrier.  
OSB-3, 12 mm.  
Plasterboard 12,5 mm.  
Pipes and boxes for the electrical communication.  
Insulation tape between panels.  
Armed hydro isolation.  
All components for assembling.  
Windows PVC triple glass, internal sills, external sills.  
External doors – “Jeldwen” Function  $U \leq 0,8 \text{ w/m}^2 \cdot \text{K}$ .  
Exterior finishing for windows and external doors with wooden trim.  
Internal finishing for windows and external doors with plasterboard.

2

## ALL INTERNAL WALL PANELS:

Plasterboard 12,5 mm.  
OSB-3, 10mm.  
Timber frame 70-195mm, columns, beams.  
Sound insulation 50-150 mm.  
OSB-3, 10mm.  
Plasterboard 12,5 mm.  
Pipes and boxes for the electrical communications.  
Insulation tape between panels.  
Armed hydro isolation.  
All components for assembling.

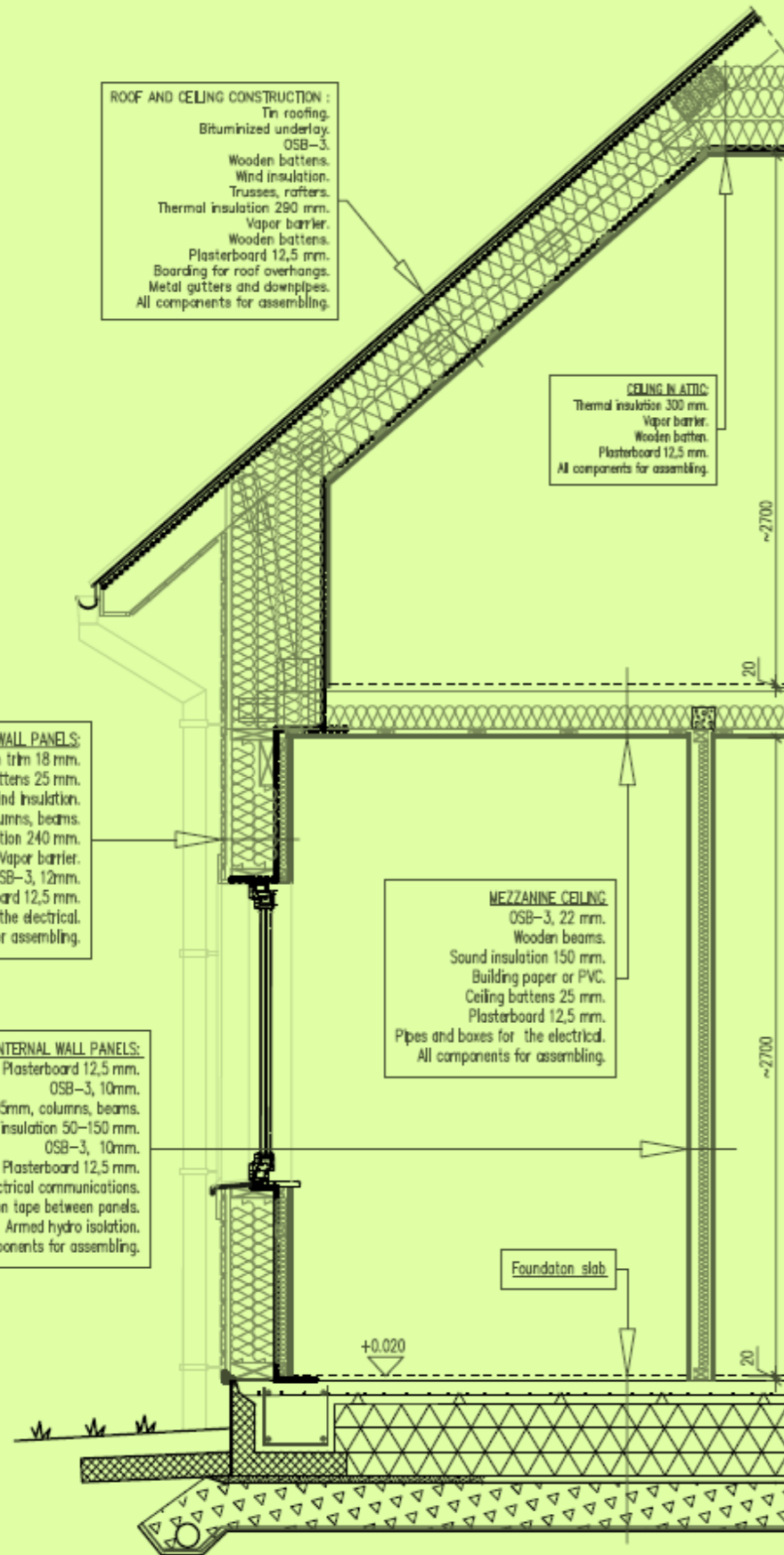
3

## ROOF AND CEILING CONSTRUCTION :

Tin roofing.  
Bituminized underlay.  
OSB-3 our battens.  
Wooden battens.  
Trusses, rafters.  
Thermal insulation 290 mm.  
Vapor barrier.  
Wooden battens.  
Plasterboard 12,5 mm.  
Boarding for roof overhangs.  
Metal gutters and downpipes.  
All components for assembling.

# Construction for 1½ story houses

## CONSTRUCTION FOR 1½ STORY HOUSES



1

### ALL EXTERNAL WALL PANELS (U~0,168 W/(m²K):

Exterior wooden trim 18 mm.  
Battens 25 mm.  
Wind insulation.  
Timber frame, columns, beams.  
Thermal insulation 240 mm.  
Vapor barrier.  
OSB-3, 12 mm.  
Plasterboard 12,5 mm.  
Pipes and boxes for the electrical communication.  
Insulation tape between panels.  
Armed hydro isolation.  
All components for assembling.  
Windows PVC triple glass, internal sills, external sills.  
External doors – “Jeldwen” Function  $U \leq 0,8 \text{ w/m}^2 \cdot \text{K}$ .  
Exterior finishing for windows and external doors with wooden trim.  
Internal finishing for windows and external doors with plasterboard.

2

### ALL INTERNAL WALL PANELS:

Plasterboard 12,5 mm.  
OSB-3, 10mm.  
Timber frame 70-195mm, columns, beams.  
Sound insulation 50-150 mm.  
OSB-3, 10mm.  
Plasterboard 12,5 mm.  
Pipes and boxes for the electrical communications.  
Insulation tape between panels.  
Armed hydro isolation.  
All components for assembling.

3

### ROOF AND CEILING CONSTRUCTION :

Tin roofing.  
Bituminized underlay.  
OSB-3 our battens.  
Wooden battens.  
Wind insulation.  
Trusses, rafters.  
Thermal insulation 290 mm.  
Vapor barrier.  
Wooden battens.  
Plasterboard 12,5 mm.  
Boarding for roof overhangs.  
Metal gutters and downpipes.  
All components for assembling.

4

### MEZZANINE CEILING:

OSB-3, 22 mm.  
Wooden beams.  
Sound insulation 150 mm.  
Building paper or PVC.  
Ceiling battens 25 mm.  
Plasterboard 12,5 mm.  
Pipes and boxes for the electrical.  
All components for assembling.

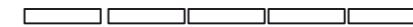
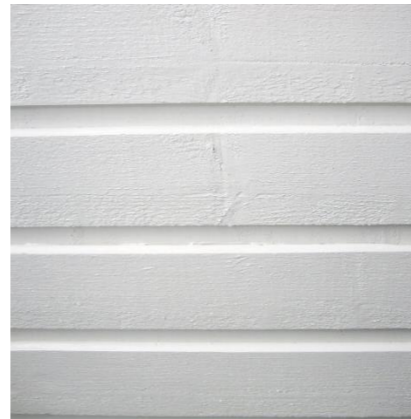


# 1 Exterior wall panelling

We mainly use coating systems that have proven reliable in Nordic conditions from different well known European suppliers, e.g. Teknos, Tikkurila, Akzo Nobel and others. For cladding with planed and finesawn surface.

Tinting can be done according to all major exterior colour charts.

- Opaque painted – basecoat and one or two layers of decorative paint
- Translucent painted – base impregnation and one or two layers of decorative stain



Exterior wall panelling  
18x145 mm



Exterior wall panelling and soffit  
boards 18x120 mm





Tinting can be done according  
to all major exterior colour  
charts.

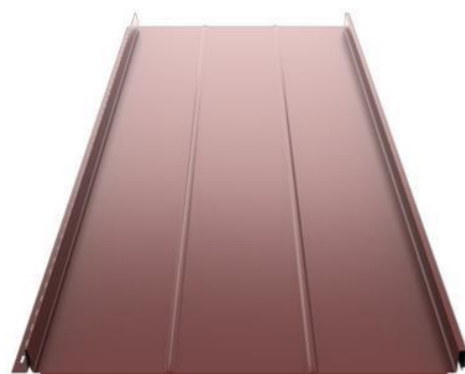


## Water drain system

3

## Tin roofing

- |   |       |  |       |
|---|-------|--|-------|
|   | RR33  |   | RR887 |
|  | RR23  |  | RR750 |
|  | RR22  |  | RR21  |
|  | RR946 |  | RR947 |





**7**

# Exterior doors

The Jeld-wen portfolio includes fully certified internal and external doors in a range of sizes, styles, materials, finishes, veneers, colours and functionalities. Many are available as doorsets, complete with frames and fittings and customisation options.



**FUNCTION  
F186 W28**



**FUNCTION  
F1896 W84**



**FUNCTION  
F2090**

White  
NCS S 0502-Y

Light grey  
NCS S 3005-R80-B

Dark grey  
NCS S 7502-B



**FUNCTION  
F1894**



**FUNCTION  
F2054 W53**



**FUNCTION  
F2053 W83**

Red  
NCS S 5040-Y60R

Brown  
NCS S 8005-Y20R

Blue  
NCS S 5020-R90B



Glazing «Kura»



Glazing «Satiin»

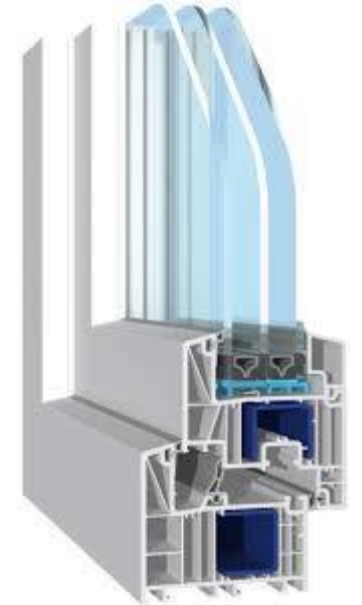


Glazing «Clear»



## 6 PVC windows with windowsills

The S 8000 IQ Plus System is a unique product with a width of 83 mm. Thanks to its six-chambered construction, it has very good thermal insulation properties (with a U-value of  $U_w = 1.3 \text{ W/m}^2\text{K}$  with standard steel construction elements) and blocks out noise. This helps to lower heating costs.



## Windowsills

**Internal windowsills** are made from high quality laminated chipboard.

**Tin external windowsills** are an ideal solution for outdoor use. They are made of tin.







## Additional explanations.

1. This building set doesn't include : foundation construction, engineering communications, inside finish, staircase, delivery and assembling costs.
2. The pictures in this description have indicative character.
3. Depending on supplier price changes, the cost of construction set may vary.
4. Depending on the supplier's material assortment and specifications changes, the materials can change, which does not deteriorate the properties of the product.
5. According to the individual needs of the client, building sets, their contents and quantities of materials may vary.
6. "AIG-konstrukcijas" provide assembling services in the following ways:
  - a) We provided assembling scheme for local assemblers,
  - b) We appoint a engineer, who leads the local assemblers work in agreed time,
  - c) "AIG-konstrukcijas" full assembling service:" everything that has been delivered is assembled".



"AIG-konstrukcijas" Ltd  
 "Bērzkalni", Ikšķiles novads, LV-5052, Latvia.  
 Janis Jansons  
 Phone: + 371 292 787 05  
 E-mail: [info@aig-familyhouses.eu](mailto:info@aig-familyhouses.eu)

